

HAZARD ALERT

SHACKLE FAILURE ON PLAYGROUND

11 October 2021

REFERENCES:

WHS 2012, s 17 Management of Risks,
WHS Regulations 2012 Chapter 3 General risk and workplace management
CCES Procedure 14: Hazard Management

OBJECTIVE:

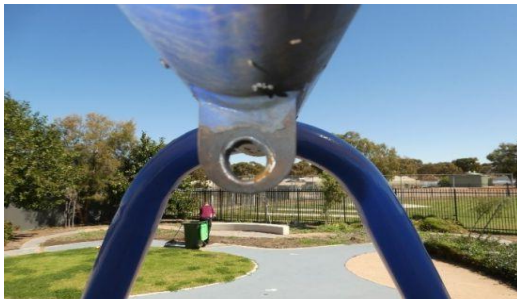
To ensure that all playground equipment is regularly inspected and maintained.

BACKGROUND:

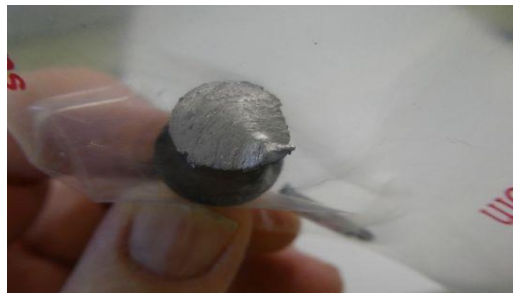
In August 2021, SafeWork SA received notification of a serious incident involving a student at a school (not Catholic). The student sustained serious facial injuries, requiring extensive surgery, after a 'D' shackle pin broke resulting in the student falling from a swing.

SafeWork SA's preliminary investigations suggests:

- The swing was supported by 'D' shackles at the top pivot point holding the chains to the rubber strap swing. One of the 'D' shackles had sheared at the pin section
- The pivot point brass bush had worn out, allowing the pivot point and 'D' shackle pin to wear due to continuous metal on metal movement.



Worn pivot hole



Broken 'D' shackle pin

PREVENTATIVE ACTIONS:

- Comprehensive risk assessments be undertaken of all playground equipment.
- Immediate inspection of all equipment.
- Scheduled maintenance inspections by a competent person.
- Refer to manufacturer's recommendations for guidance on installation, maintenance and inspections.
- Information, training and instruction are provided to workers to enable them to competently inspect and maintain playground equipment.

Further information on playground safety can be located at: [Playground safety | Kidsafe SA](#)

In particular, refer to this document: [PowerPoint Presentation \(kidsafesa.com.au\)](#)

For enquiries or further information, please contact your WHS Consultant at CSHWSA